

# Daytime Drama

*On Behalf of  
Carroll County Economic Development*

*By: Anirban Basu  
Sage Policy Group, Inc.*

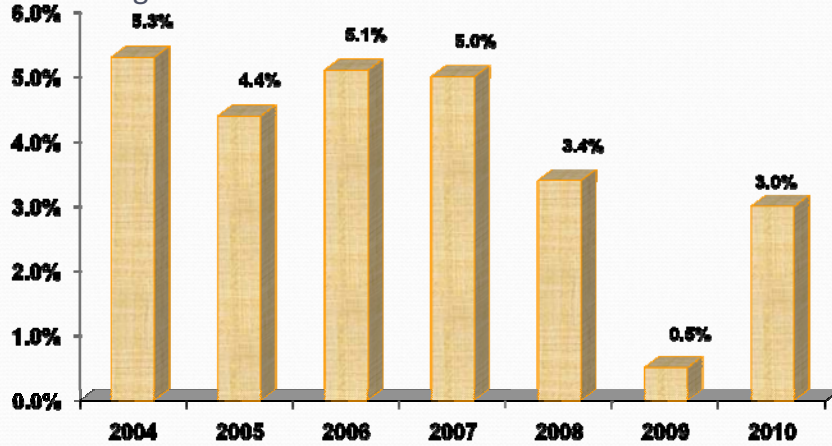
*February 26, 2009*



# As the World Turns (more slowly)



### Historic and Projected World Output Growth, 2004 through 2010\*

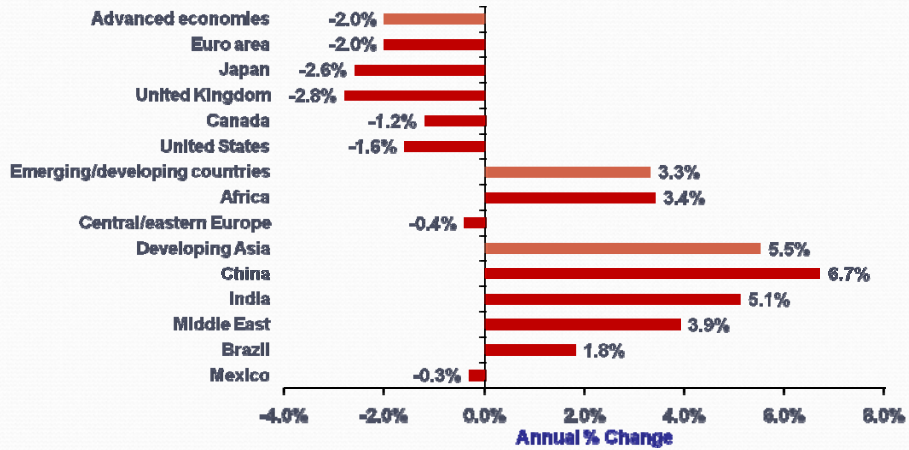


Source: International Monetary Fund

\*2009-2010 data are projections



### Estimated Growth in Output by Select Global Areas, 2009



Source: International Monetary Fund



## Top 12 Stock Exchanges 2008 Growth

Rank	Exchange	Index	2008 % Change
7	Shanghai SE	Shanghai Composite	-65.4%
10	Borsa Italiana	MIBTel	-48.5%
11	Hong Kong Exchanges	Hang Seng Index	-47.9%
5	Euronext	CAC 40	-42.6%
4	Tokyo SE	Nikkei 225	-41.5%
6	Frankfurt SE	DAX	-40.2%
8	Bolsa De Madrid	Madrid General	-40.0%
2	Nasdaq	NASDAQ Composite	-39.6%
9	TSX Group	S&P TSX Composite	-35.4%
12	Swiss Exchange	Swiss Market	-34.2%
1	NYSE Group	DJI A	-33.8%
3	London SE	FTSE 100	-31.3%

Source: Global Finance

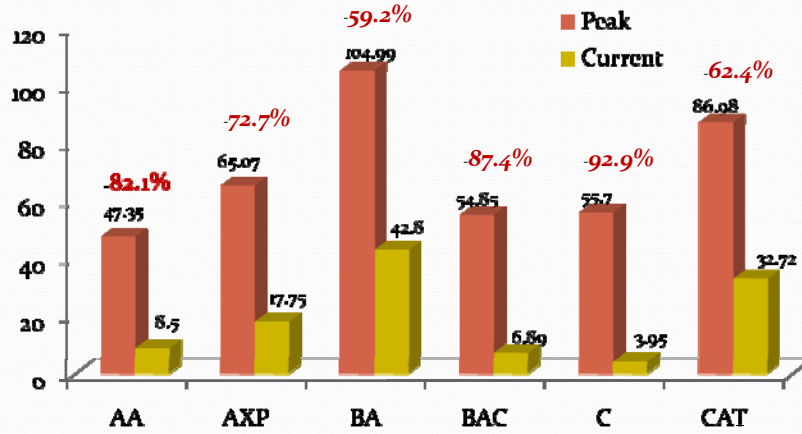


## Days of Our Lives





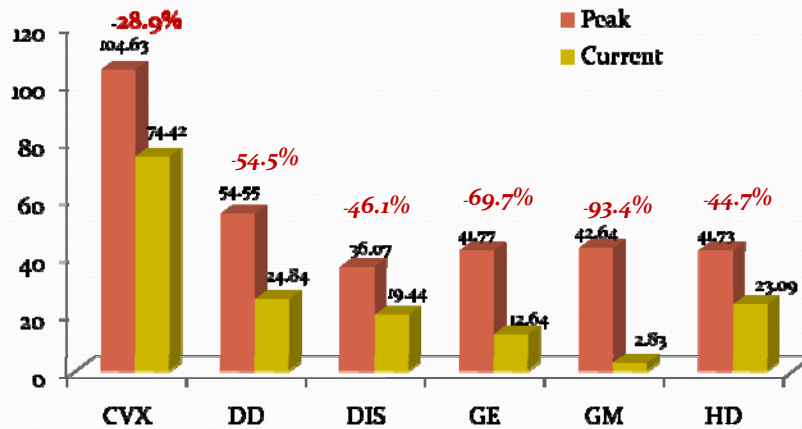
## Dow Components, as of 2/10/09 (2 yr high)



Source: Yahoo Finance



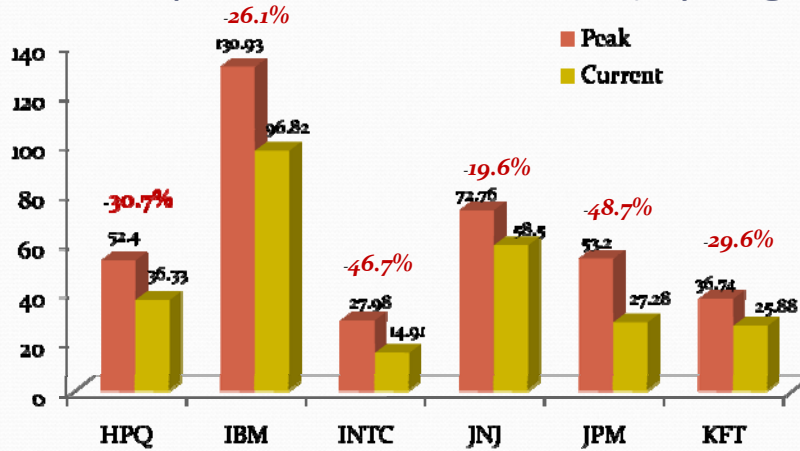
## Dow Components, as of 2/10/09 (2 yr high)



Source: Yahoo Finance



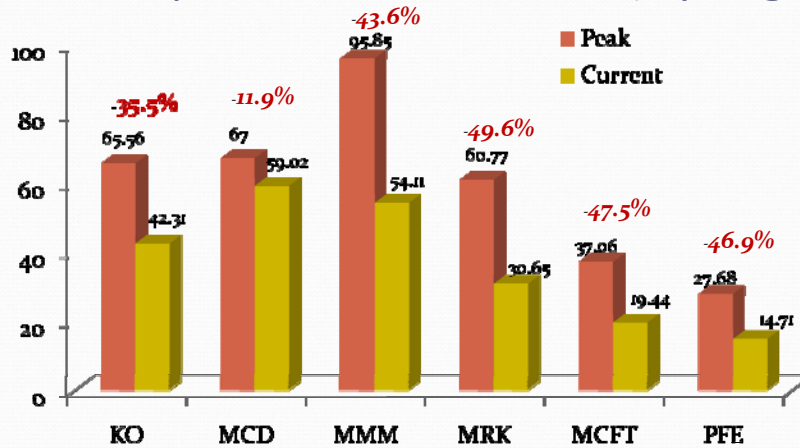
## Dow Components, as of 2/10/09 (2 yr high)



Source: Yahoo Finance



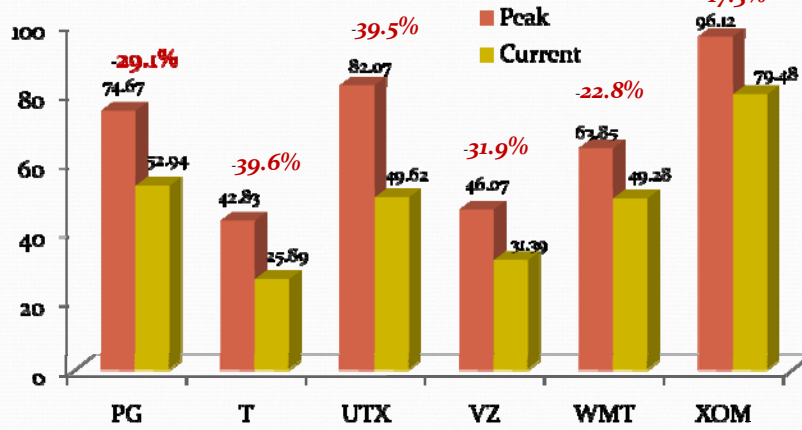
## Dow Components, as of 2/10/09 (2 yr high)



Source: Yahoo Finance



## Dow Components, as of 2/10/09 (2 yr high)

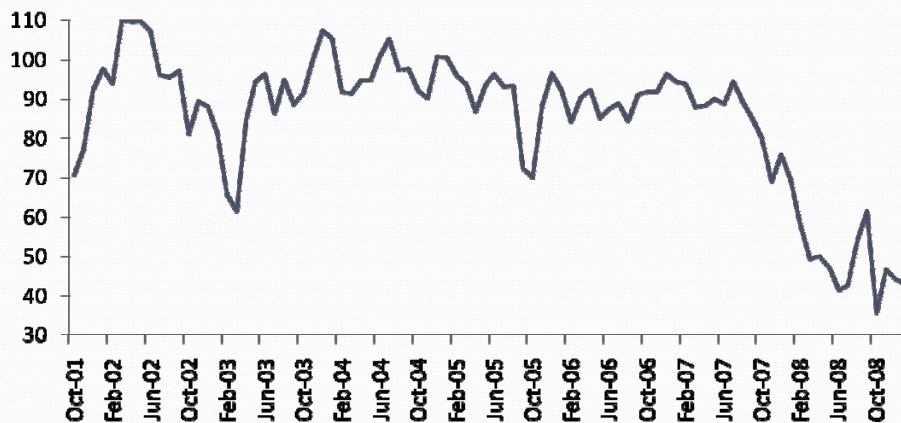


Source: Yahoo Finance



## Conference Board Consumer Expectations Index

October 2001 through January 2009

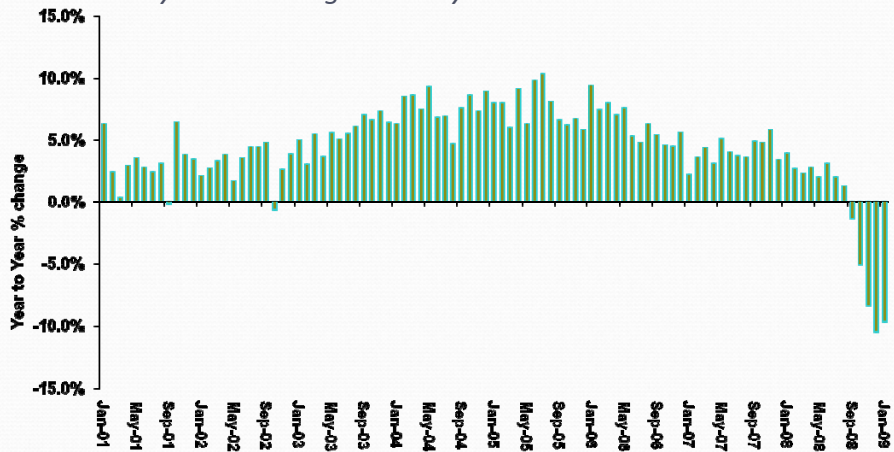


Source: Conference Board



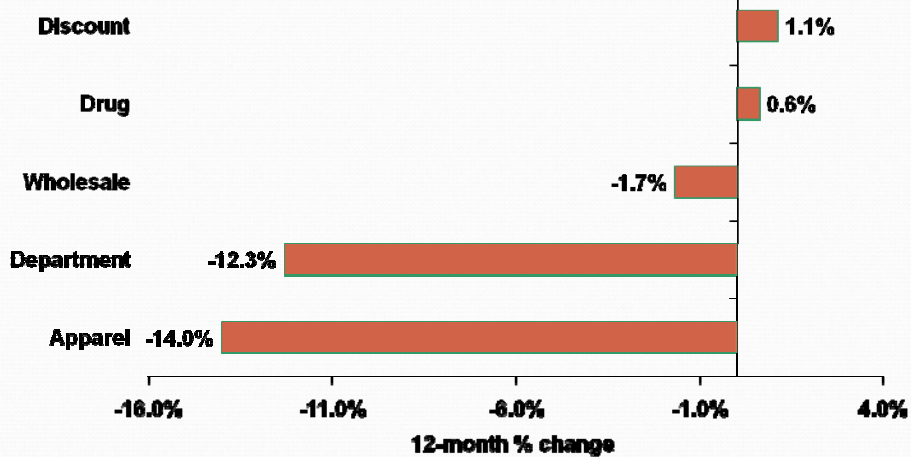
## Retail & Food Services Sales

January 2001 through January 2009

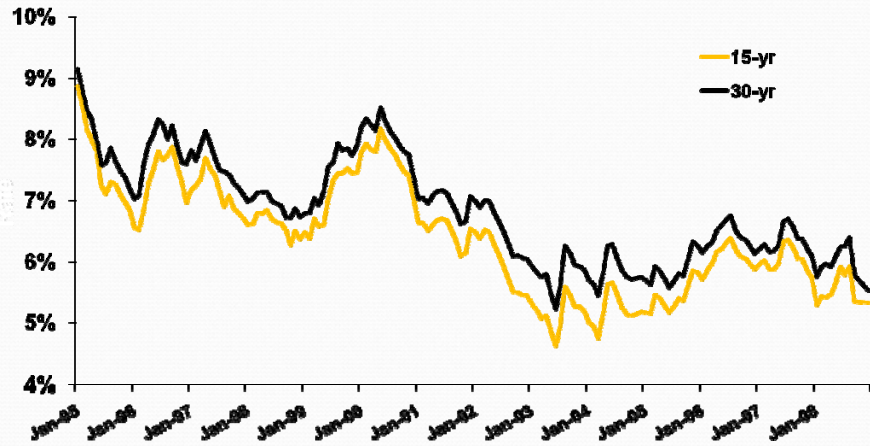


## U.S. Chain Store Sales Growth by Type of Store

January 2008 vs. January 2009



## 15-Year & 30-Year Fixed Mortgage Rates January 1995 through December 2008

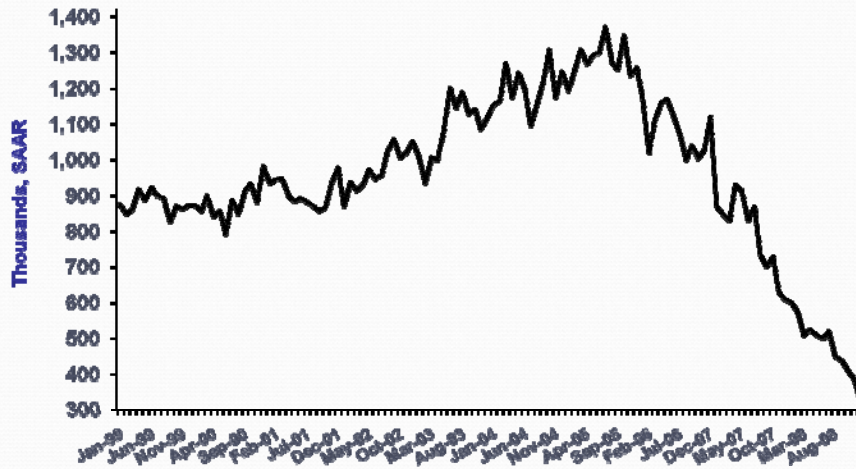


Source: Freddie Mac



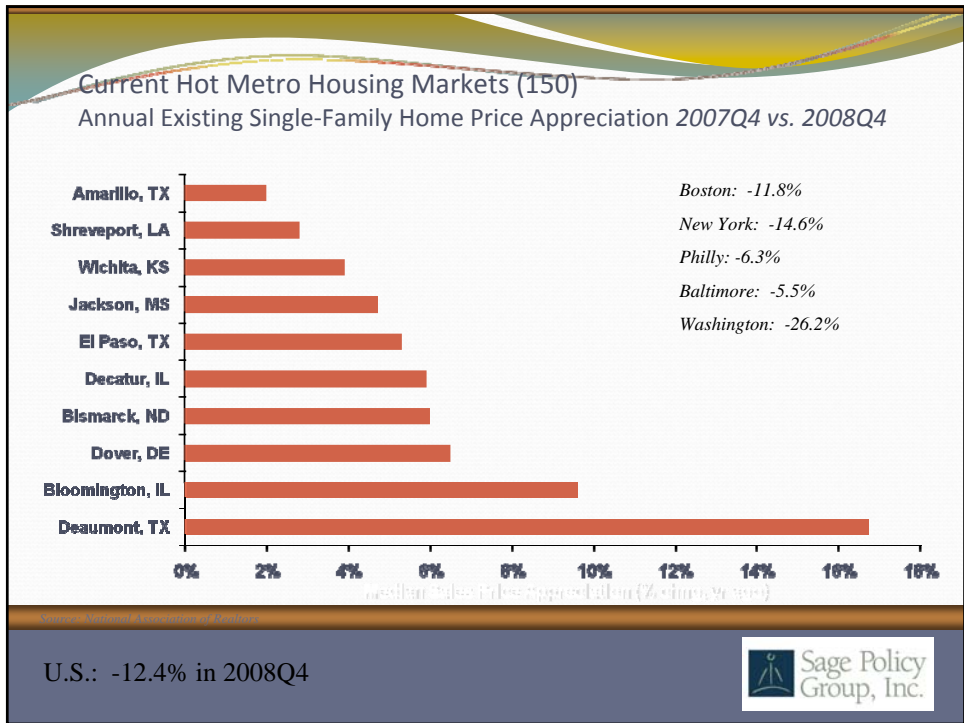
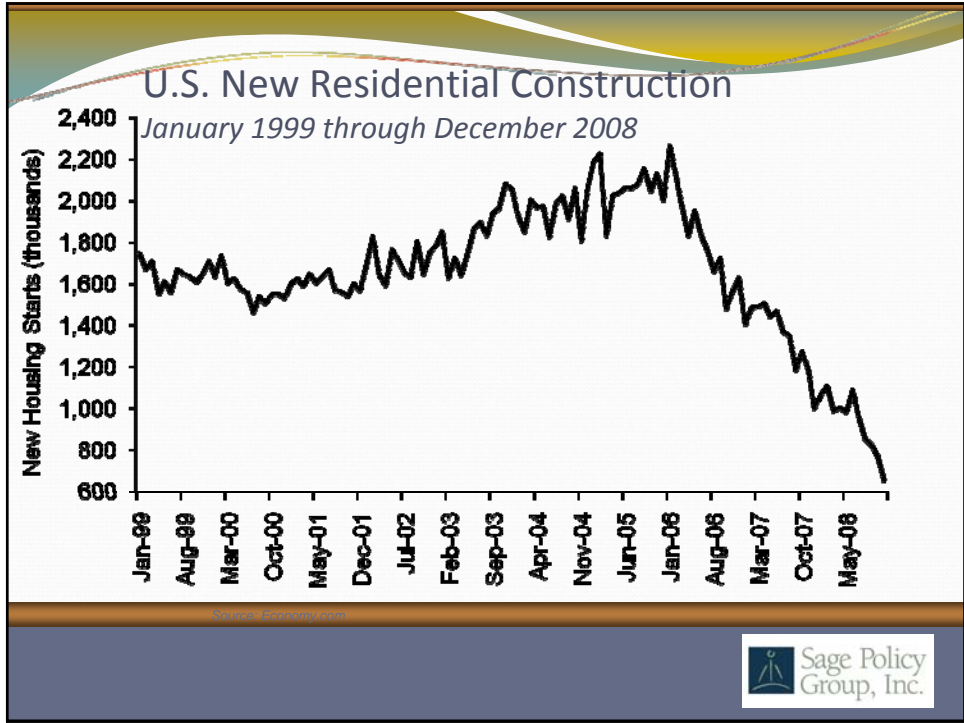
## U.S. New Home Sales January 1999 through December 2008

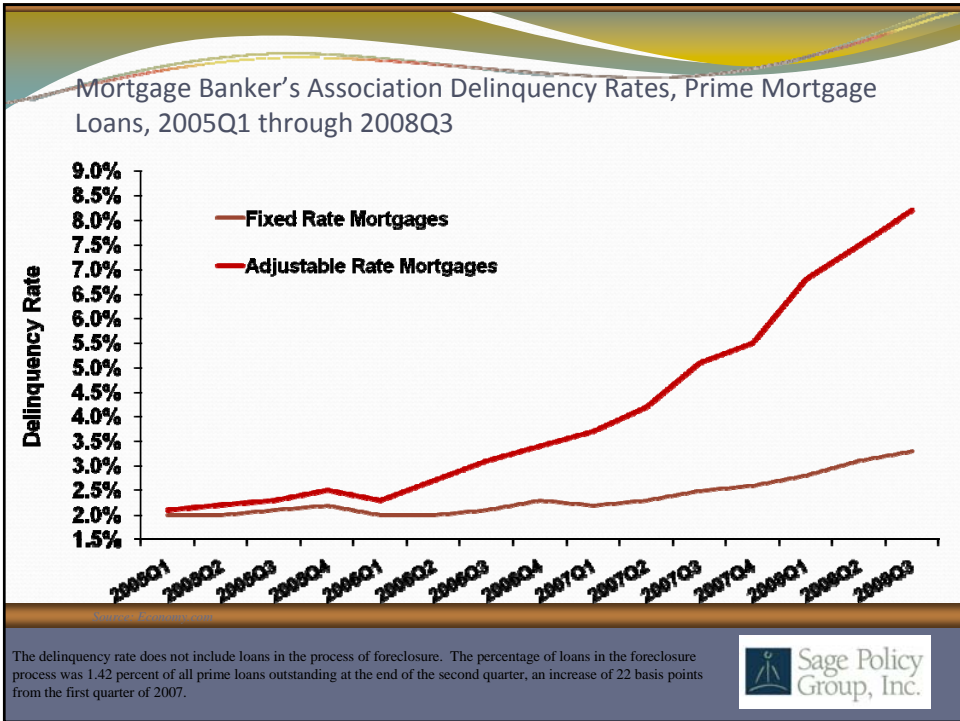
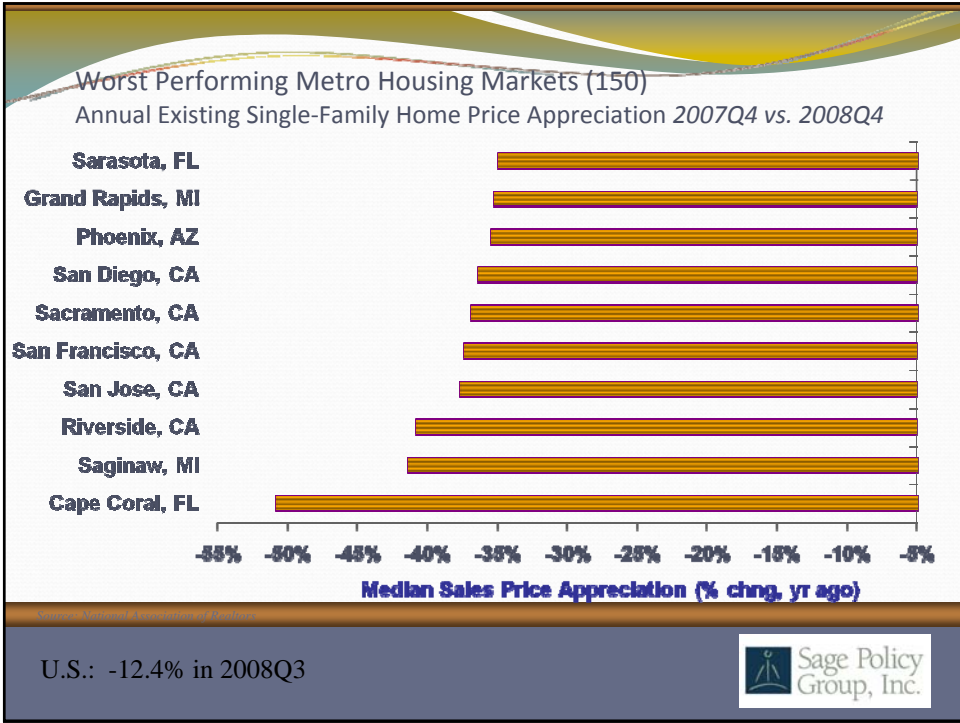
January 1999 through December 2008

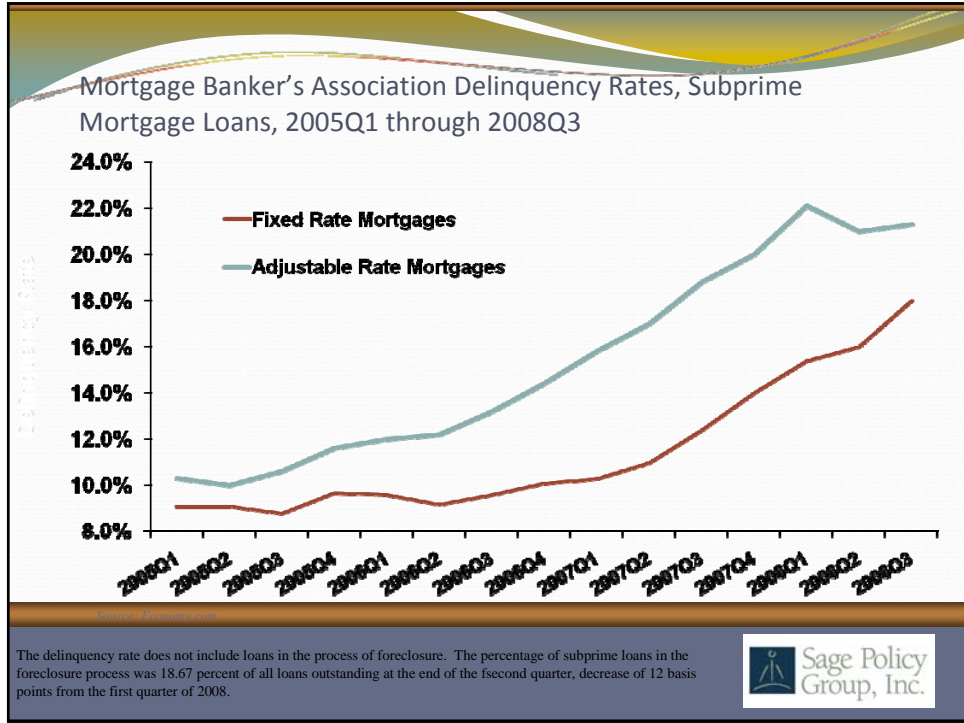


Source: Housing and Urban Development









### Maryland Home Prices, Jan. 09 vs. Jan. 08

Rank	County	%Chng	Rank	County	%Chng
1	Allegany	38.4%	13	Carroll	-15.8%
2	Cecil	6.4%	14	Kent	-15.9%
3	Washington	-3.5%	15	Queen Anne's	-17.7%
4	Baltimore County	-4.2%	16	Frederick	-18.7%
5	Anne Arundel	-6.5%	17	Baltimore City	-19.0%
6	Calvert	-8.1%	18	Montgomery	-22.0%
6	Charles	-8.6%	19	Prince George's	-22.3%
6	Wicomico	-9.2%	20	Worcester	-24.6%
9	Harford	-9.5%	21	Caroline	-28.3%
10	St. Mary's	-9.6%	22	Dorchester	-44.0%
11	Garrett	-12.5%	23	Somerset	-62.5%
12	Howard	-14.4%	24	Talbot	-62.9%
	<b>MARYLAND</b>	<b>-14.7%</b>			

**Sage Policy Group, Inc.**

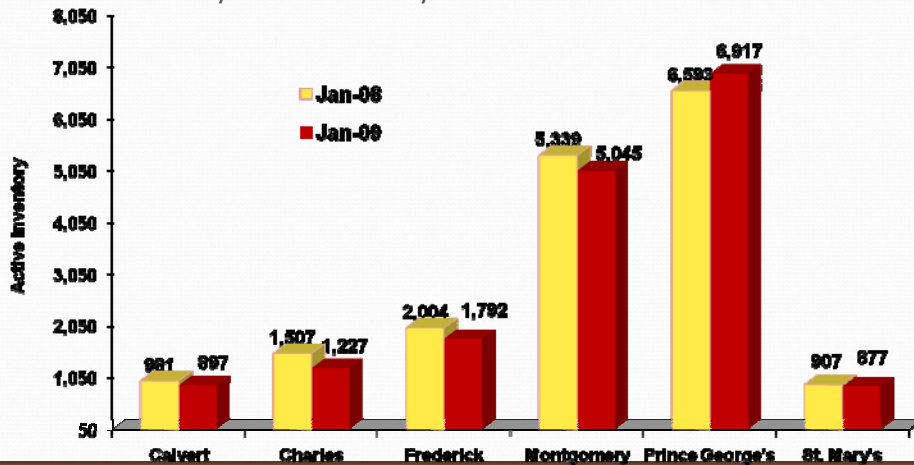
### Maryland Median Home Sales, Jan. 09 vs. Jan. 08

Rank	County	%Chng	Rank	County	%Chng
1	Calvert	10.8%	13	Washington	-25.0%
2	Prince George's	5.2%	14	Allegany	-27.8%
3	Frederick	-4.0%	15	<b>Carroll</b>	<b>-28.4%</b>
4	Montgomery	-8.9%	15	Wicomico	-35.6%
5	Howard	-9.2%	17	Garrett	-35.7%
6	Dorchester	-14.3%	18	Queen Anne's	-41.7%
7	St. Mary's	-18.2%	19	Cecil	-43.8%
8	Harford	-18.5%	20	Worcester	-44.1%
9	Anne Arundel	-20.8%	21	Caroline	-50.0%
10	Baltimore County	-22.2%	22	Talbot	-52.2%
10	Charles	-22.2%	23	Kent	-62.5%
12	Baltimore City	-24.3%	24	Somerset	-80.0%
	<b>MARYLAND</b>	<b>-17.7%</b>			

Source: MDS



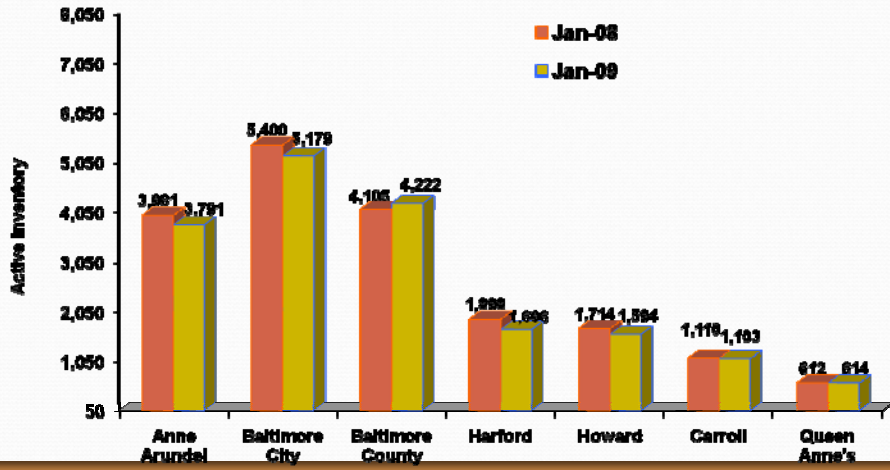
### Active Housing Inventory by Suburban MD, January 2009 vs. January 2008



Maryland = Jan. 2008: 44,481 Jan. 2009: 43,160



Active Housing Inventory by Baltimore MSA Jurisdiction,  
January 2008 vs. January 2009

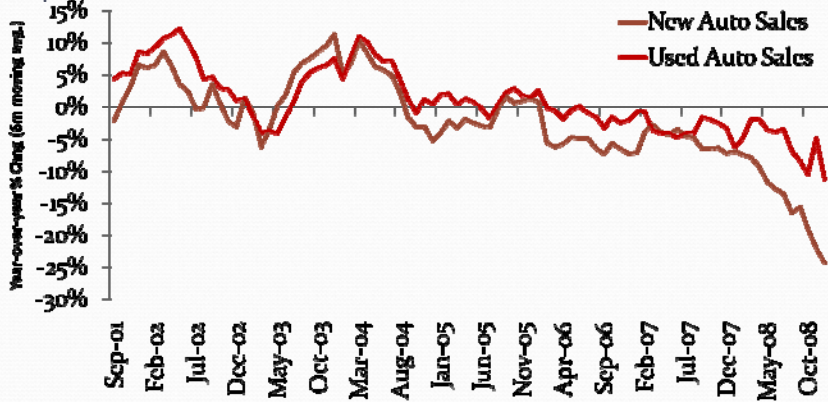


Maryland = Jan. 2008: 44,481 Jan. 2009: 43,160



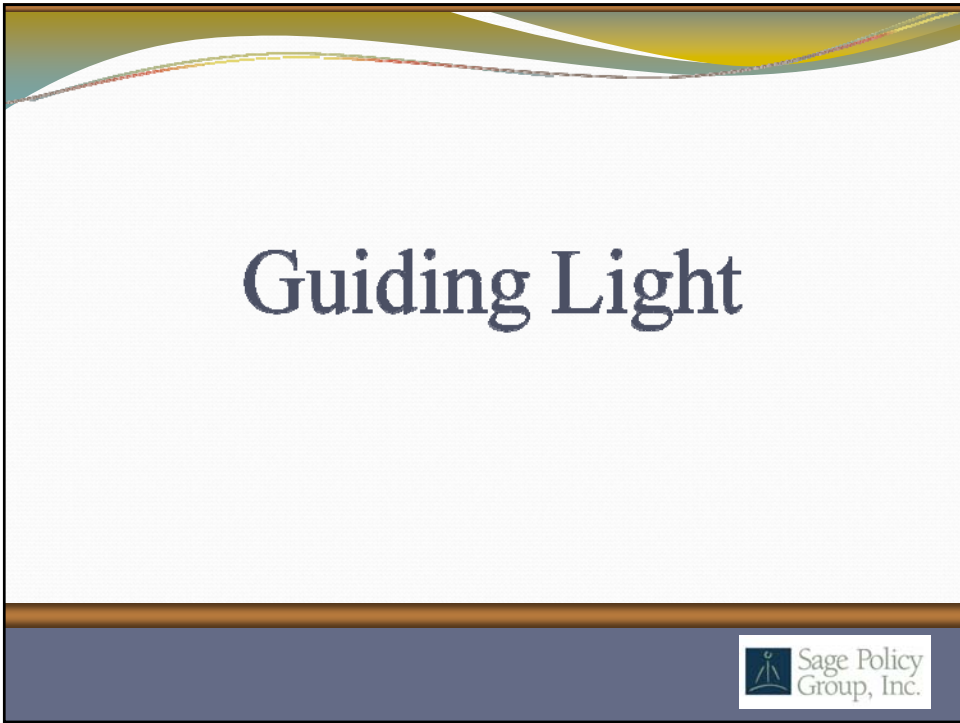
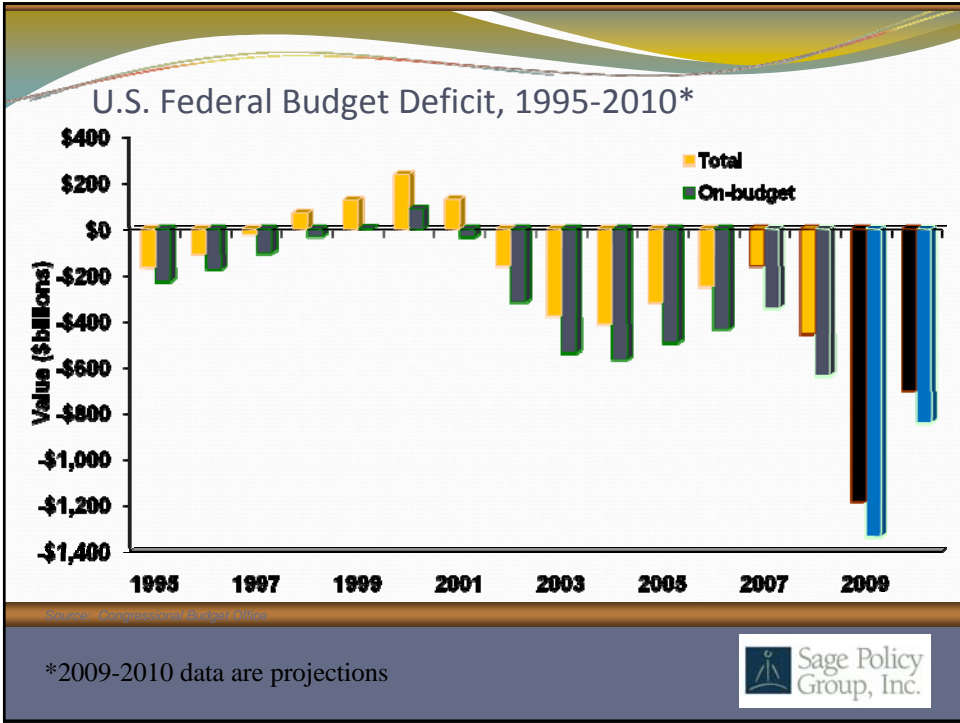
## Maryland Auto Sales

Sep. 2001- Dec. 2008

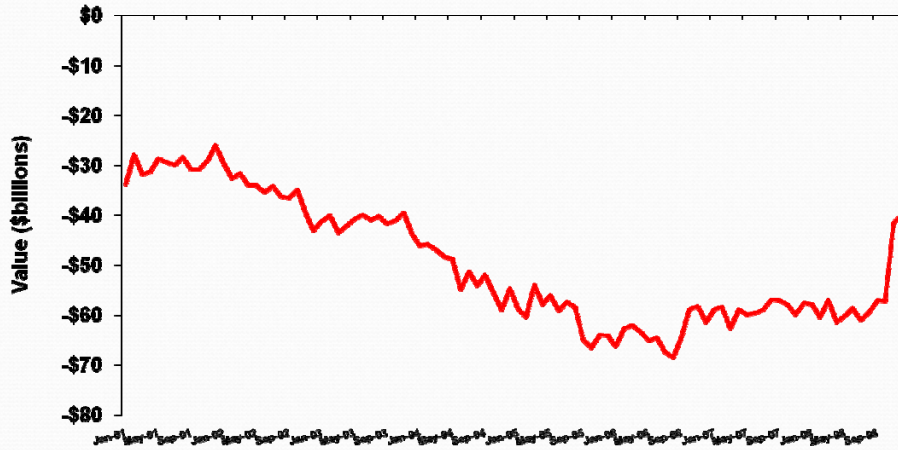


Dec. 08 New Car Sales: 17,220, down 29.2% from Dec. 07  
Dec. 08 Used Car Sales: 42,611, down 5.9% from Dec. 07





U.S. Trade Deficit, January 2001 through December 2008



Source: Commerce Dept.

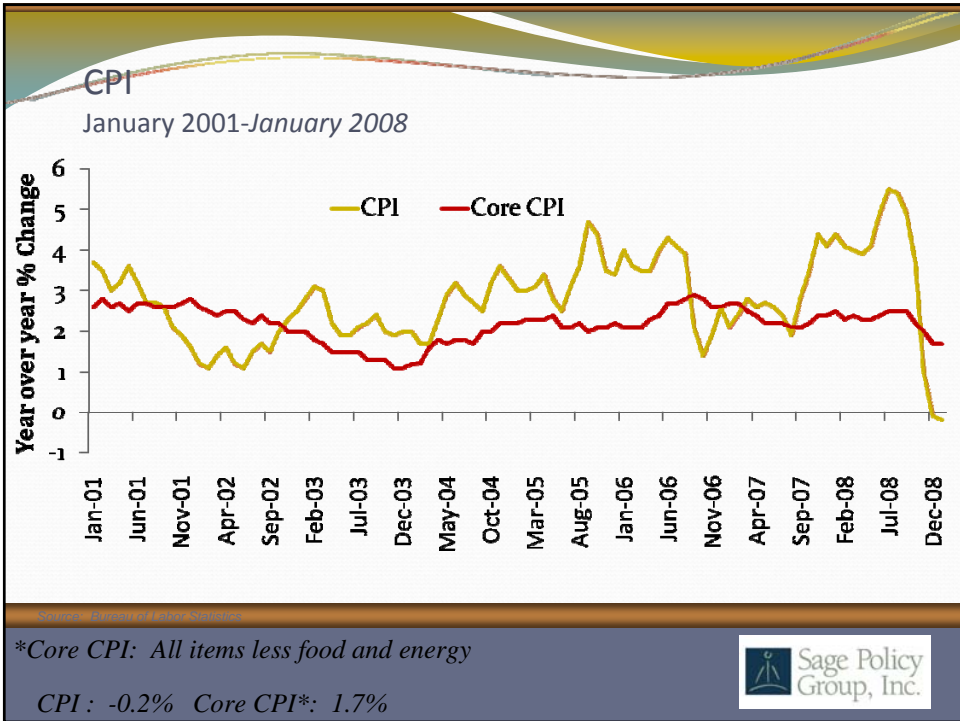
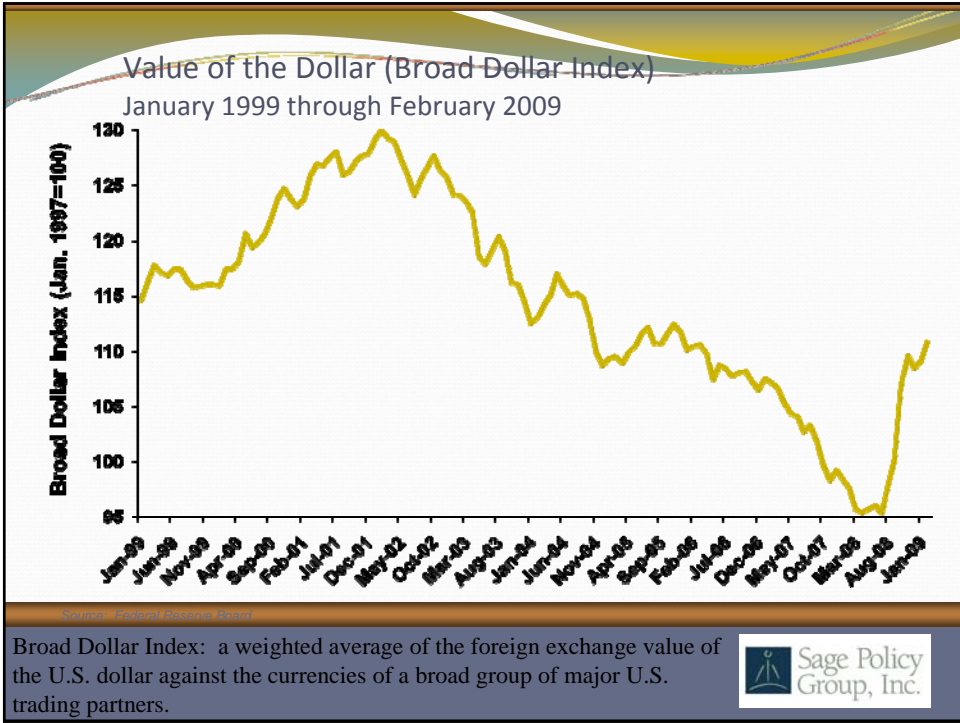


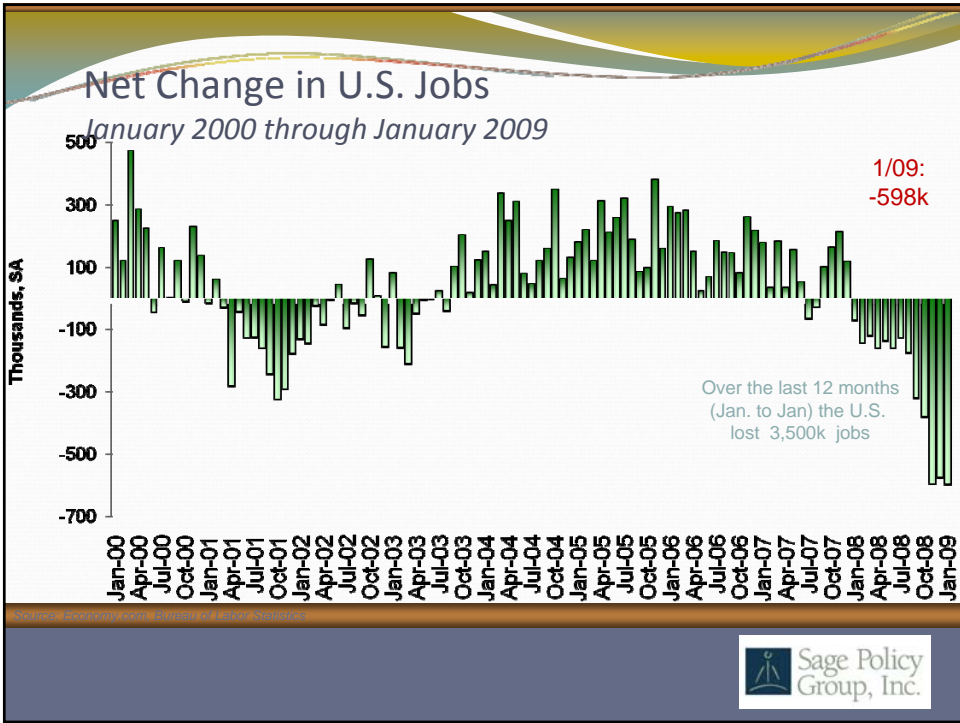
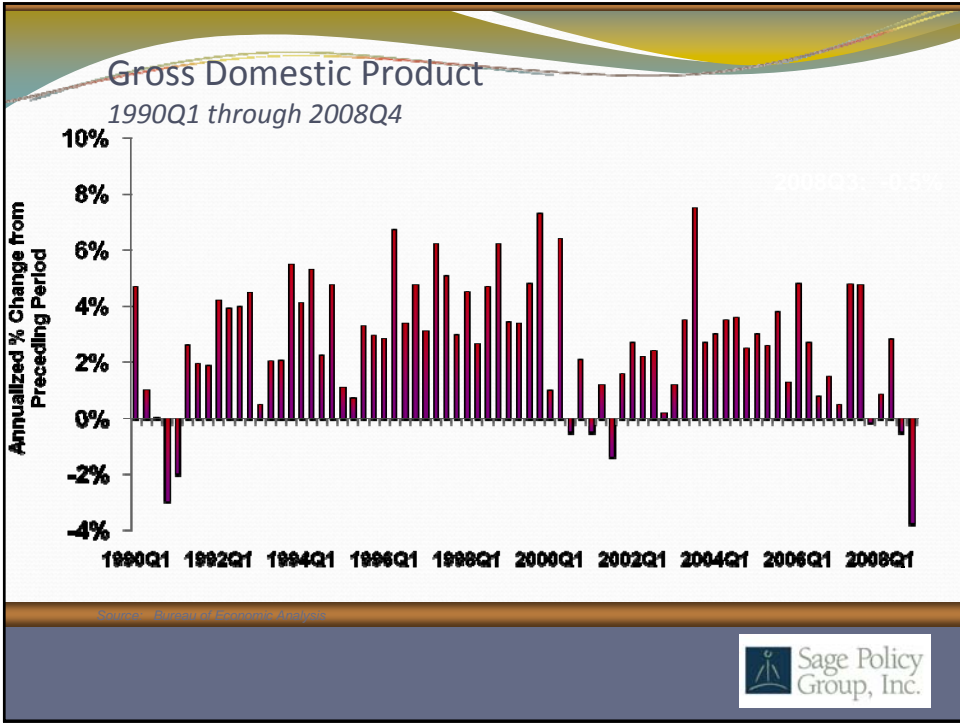
U.S. Trade Deficit  
Jun. 08-Dec. 08 Net Change by Component

Date	Trade Balance	Exports	Imports
June	1,331	5,898	4,568
July	-2,429	5,271	7,699
August	2,260	-2,738	-4,998
September	2,299	-10,522	-12,821
October	-132	-3,553	-3,421
November	15,625	-9,127	-24,752
December	1,654	-8,518	-10,172

Source: Commerce Dept.





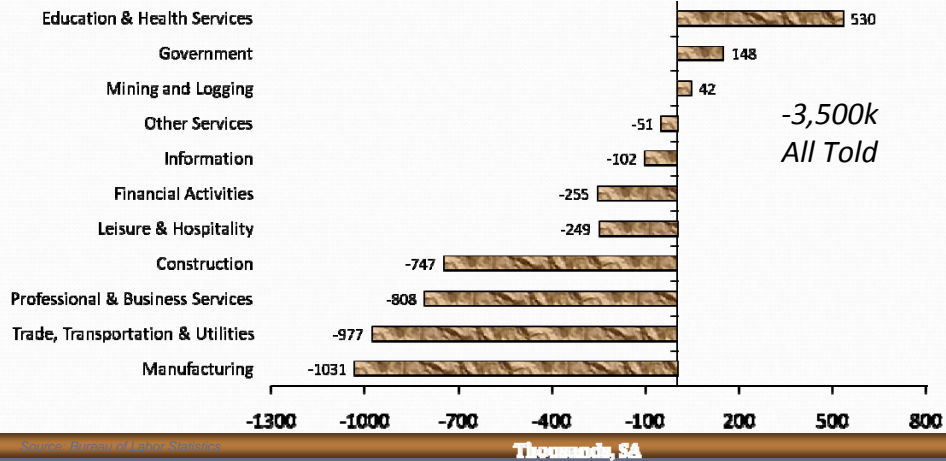


## National Nonfarm Employment

by Industry Sector Groups

January 2008 v. January 2009

Absolute Change

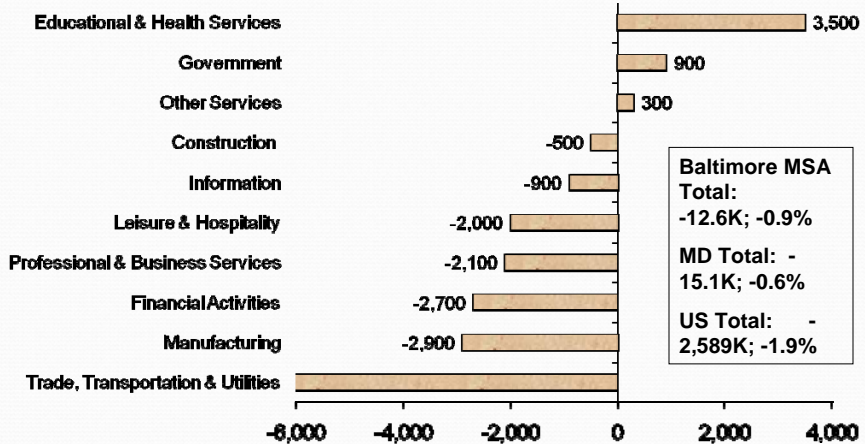


## Baltimore MSA Nonfarm Employment

by Industry Sector Groups (NSA)

December 2007 v. December 2008

Absolute Change

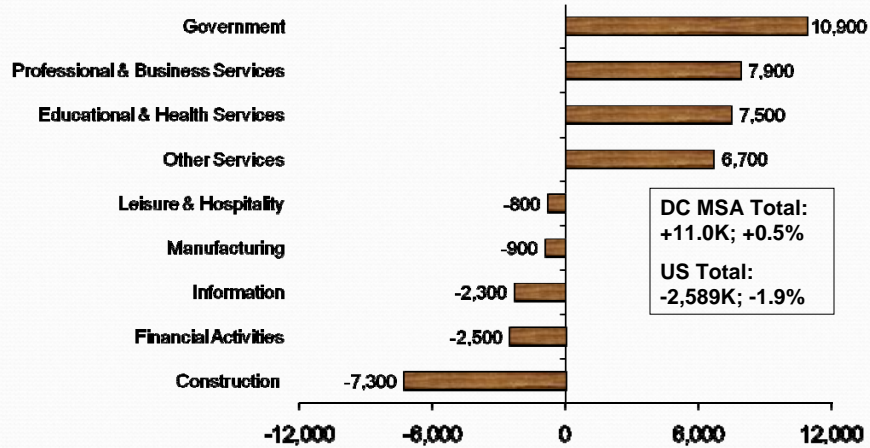


## Washington, D.C. MSA Nonfarm Employment

### by Industry Sector Groups (NSA)

December 2007 v. December 2008

Absolute Change



Source: Bureau of Labor Statistics



## Unemployment Rates, U.S. States (SA)

December 2008

Rank	State	Rate	Rank	State	Rate	Rank	State	Rate
1	Wyoming	3.4	18	Colorado	6.1	35	Alaska	7.5
2	North Dakota	3.5	19	Arkansas	6.2	36	Illinois	7.6
3	South Dakota	3.9	19	Delaware	6.2	37	Kentucky	7.8
4	Nebraska	4.0	19	Wisconsin	6.2	37	Ohio	7.8
5	Utah	4.3	22	Idaho	6.4	39	Tennessee	7.9
6	Iowa	4.6	22	Vermont	6.4	40	Mississippi	8.0
6	New Hampshire	4.6	24	Alabama	6.7	41	Florida	8.1
8	New Mexico	4.9	24	Pennsylvania	6.7	41	Georgia	8.1
8	Oklahoma	4.9	26	Arizona	6.9	43	Indiana	8.2
8	West Virginia	4.9	26	Massachusetts	6.9	44	North Carolina	8.7
11	Kansas	5.2	28	Minnesota	6.9	45	District of Columbia	8.8
12	Montana	5.4	29	Maine	7.0	46	Oregon	9.0
12	Virginia	5.4	30	New York	7.0	47	Nevada	9.1
14	Hawaii	5.5	31	Connecticut	7.1	48	California	9.3
15	Maryland	5.8	31	New Jersey	7.1	49	South Carolina	9.5
16	Louisiana	5.9	31	Washington	7.1	50	Rhode Island	10.0
17	Texas	6.0	34	Missouri	7.3	51	Michigan	10.6

Source: Bureau of Labor Statistics

• U.S. Unemployment Rate: December 08=7.2%



## MD County Unemployment Rates, Nov. 2008

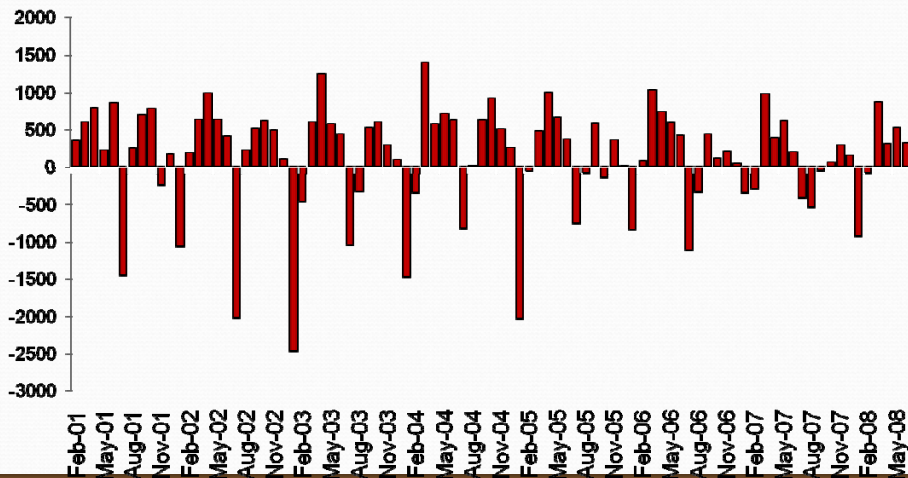
Rank	County	UE	Rank	County	UE
1	Howard County	3.6	13	Prince George's County	5.3
2	Montgomery County	3.7	14	Baltimore County	5.4
3	Calvert County	4.2	14	Garrett County	5.4
3	Saint Mary's County	4.2	16	Cecil County	6.0
5	Frederick County	4.3	17	Allegany County	6.1
6	Charles County	4.4	18	Caroline County	6.4
7	Anne Arundel County	4.5	19	Washington County	6.7
7	Carroll County	4.5	20	Wicomico County	6.9
9	Queen Anne's County	4.9	21	Somerset County	7.6
10	Harford County	5.0	22	Baltimore City	8.1
10	Talbot County	5.0	23	Dorchester County	8.2
12	Kent County	5.1	24	Worcester County	11.2
	Maryland	5.3		United States	6.7

Source: Bureau of Labor Statistics

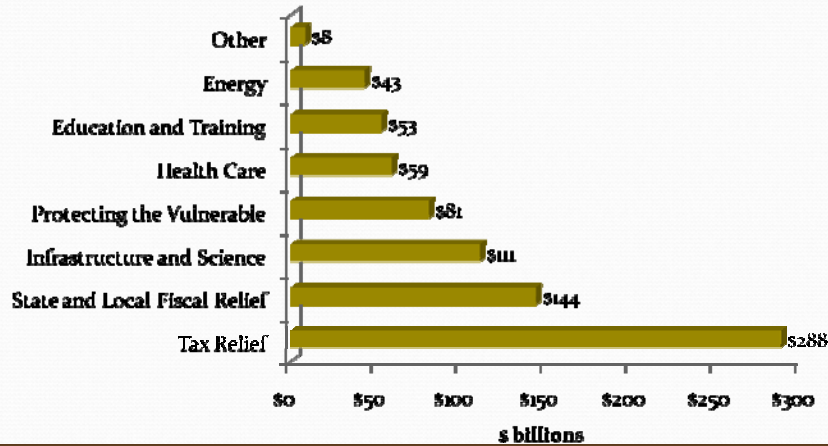


## Net Change in Carroll County Jobs

February 2001 through June 2008



## Overview of where the \$787 billion is going



*\*It is estimated MD will have 66,000 jobs saved/created in the next two years.*



## The American Recovery and Reinvestment Act of 2009

(\$ billions)

Division A- Appropriations												
	2009	2010	2011	2012	2013	2014	2015	2016	2017	2018	2019	Total
Estimated Budget Authority	288.7	7.1	4.6	3.6	2.5	1.1	1.1	1.1	1.1	0.5	0	311.2
Estimated Budget Outlays	34.8	110.7	76.3	38.1	22.9	12.8	7.0	3.1	1.6	0.8	0.1	308.3
Division B- Direct Spending												
	2009	2010	2011	2012	2013	2014	2015	2016	2017	2018	2019	Total
Estimated Budget Authority	90.3	107.6	49.0	7.6	7.3	15.1	4.7	-4.7	-4.1	-1.9	-1.4	269.5
Estimated Budget Outlays	85.3	108.6	49.9	8.1	7.4	15.1	4.7	-4.7	-4.1	-1.9	-1.4	267.0



## Search for Tomorrow

- Stimulus, stimulus, stimulus;
  - This is the worst of it from a broader economic perspective;
  - Recovery for office, retail and other construction components being stimulated indirectly is probably at least two years away;
  - Unemployment will likely peak above 9 percent, perhaps much higher than that;
  - Ben Bernanke as hero;
  - Washington, D.C. is still the new financial capital of North America.
- &



## Thank You

- You can always reach me at [abasu@sagepolicy.com](mailto:abasu@sagepolicy.com)
- If you appreciate this type of information and would like regular updates, please see our newsletter service at [www.spgtrend.com](http://www.spgtrend.com)
- Also, if you need us in a hurry, we are at 410.522.7243 (410.522.SAGE)
- Please contact us when you require economic research & policy analysis.

